



Pellet boiler
Pellson X3S

8 - 29 kW

Pellson Family

The word Pellson consists of the words pellets and the sun. Like the sun gives energy to the tree, the pellets give energy to your home. Pellson is therefore the family name of our fully automatic pellet boilers.



We simplify your lives

Everything we do is made for people. Each of our innovations has been created with the aim of simplifying and improving your lives. We are particularly proud of our advantages in automating boilers and contributing to a cleaner environment.

Development and production in Slovenia

All Waltis boilers are 100% developed and manufactured in Slovenia.

Energy Conservation

The Pellson X3S has undergone testing at an internationally accredited laboratory in KIWA, Italy, and was placed in the A++ class of energy efficiency, which means that it is one of the most efficient boilers on the market.



More than 1500 households.

The first Pellson boiler was installed in Slovenian village named Pivka in 2009. Today more than 1500 households in are heated with Pellson boilers.

Our vision was to develop the most reliable automatic pellet boiler and to achieve this goal, we have been monitoring the operation of boilers on the market all these years.

The result of many years of testing and development is the new Pellson X3S.



Comfort and reliability

All processes that take place inside the boiler are fully automatic. Automatic burner cleaning, pellet ignition, cleaning of the heat exchanger, automatic removal of ash from the combustion chamber and adjustment of the operating power, according to your needs. All of these systems are designed to save you time and offer complete comfort at heating your home. The only work left for you to do is emptying the ash container twice a month.

Integrated pellet storage

Integrated pellet storage in the boiler construction, allows for one-week of energy independence.

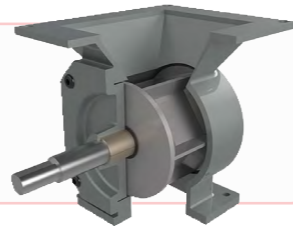
Flexibility

All Pellson boilers are managed by a microprocessor control unit, developed by the Waltis Development Team with thirty years of experience. The philosophy of boiler control development is focused towards the automatic adaptability of the boiler to various operating conditions, fully automatic operation and extraordinary ease of operation. The operation of the boiler is done completely automatically and is adapted to the current heating needs of building.



Protection against pellet backfill ignition

A fire chamber dispenser provides for 100% security that ensures constant physical separation of pellets in the storage tank and burner feed system and precise dosing of pellets.



Automatic ignition of pellets

The basis for the automatic operation of the boiler is automatic ignition of pellets. The Pellson X3S is equipped with a filament which ensures that the pellets are automatically ignited when subjected to a high temperature. The ignition process is extremely economical due construction technology of the boiler.

5 millimeters of sheet metal

All Pellson products are made from 5 millimeters sheet metal, which is the basis for the long lifetime of the boiler.

Automatic removal of ashes from the combustion chamber

A special auger draws the ash from the firebox into the ash container, therefore cleaning the furnace in the heating season is not necessary. It is advisable to clean the firebox at least once a year.

Constant energy efficiency

The whole system is made of highly flame-retardant stainless inox material, which provides for longer life of the appliance and thus lower maintenance costs. The system ensures the day-to-day cleanliness of the tube exchanger, which is reflected in the high efficiency of the boiler throughout the heating season.

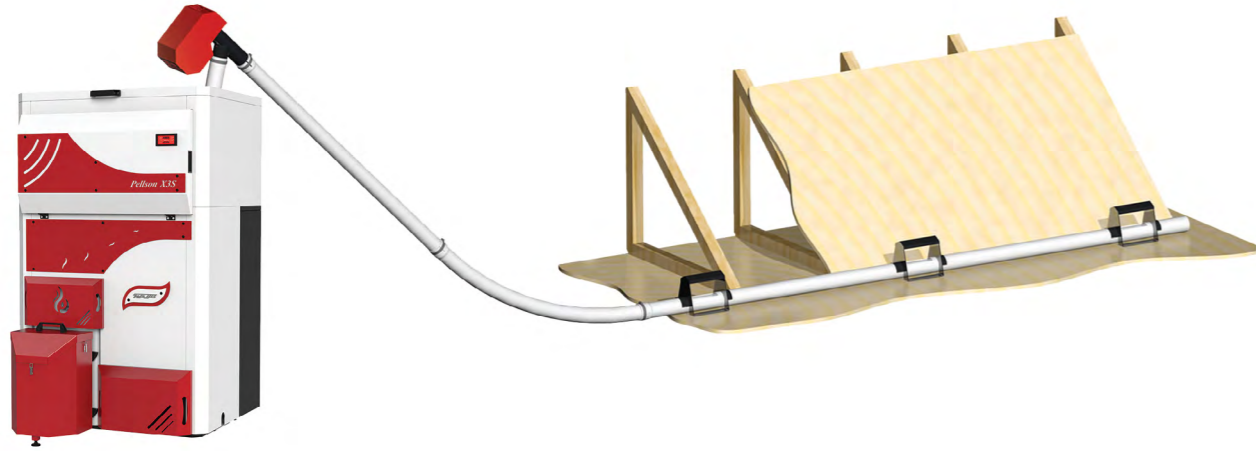


Cleaning the ash from the heat exchanger chamber is required only a few times a year

The ash generated by the automatic cleaning of the heat exchanger should be cleaned approximately once a month or at approximately 500-1000 kilograms of pellets burned.

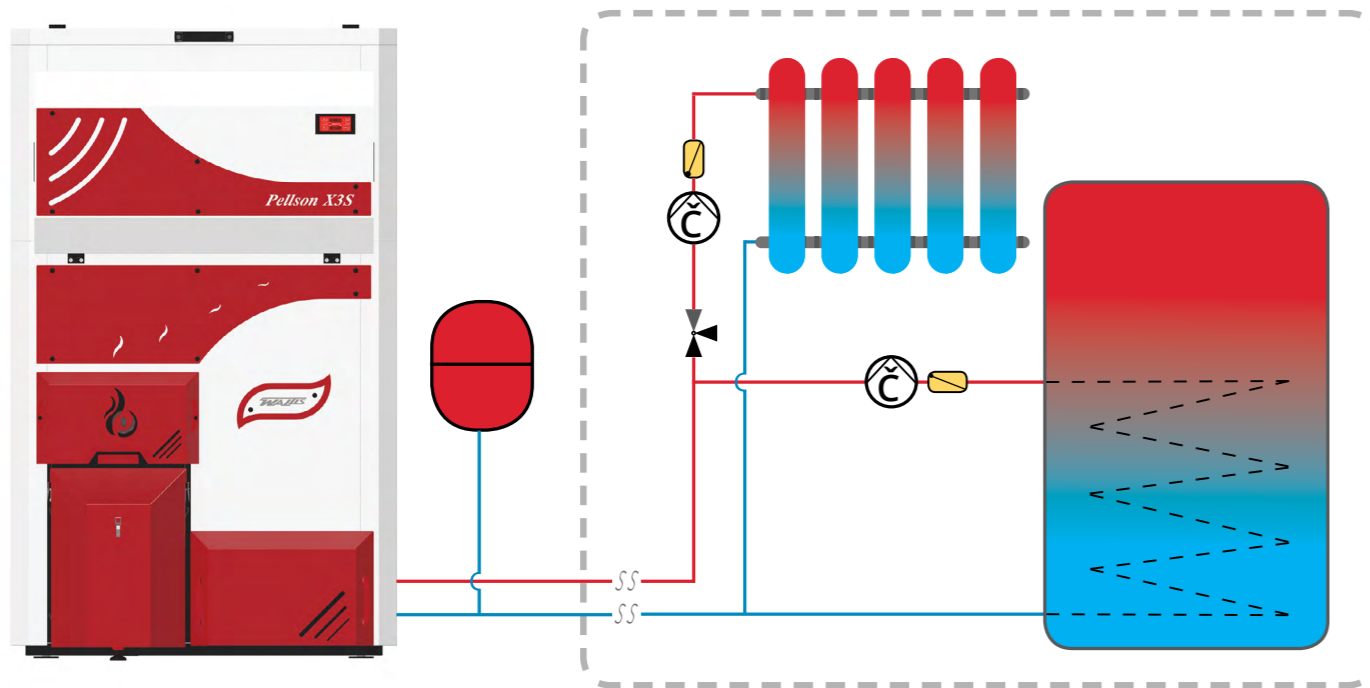
Dosing system from a remote storage

It is suitable for buildings with additional space near the boiler room, where it is possible to build an annual pellet storage. The system is extremely flexible and allows for implementation in various spatial arrangements. The system set also includes controls, sensors and everything else necessary for the autonomous operation of the system. The pellet stack is designed individually for each object, depending on the available space.

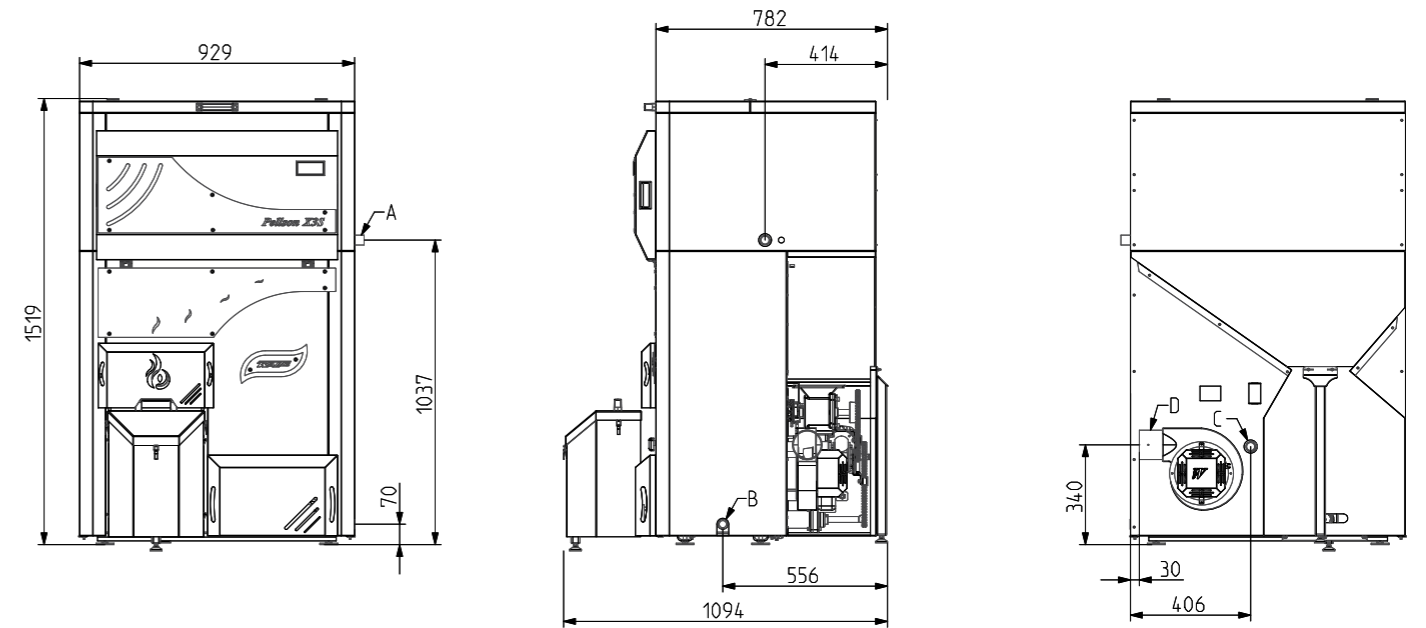


Boiler Scheme

The boiler contains an anti-condensation system that ensures the temperature of the return water to the boiler. This system prevents condensation in the boiler and ensures a long service life.



Dimensions:



Connector Dimensions:

POSITION	DIMENSION	DESCRIPTION
A	1"	Hot water
B	3/4"	Water fill connection
C	1"	Cold water
D	100 mm	Chimney connection

Characteristics:

DESCRIPTION	MARKING	Pellson X3S
Power	[kW]	8,16/28,51
Efficiency	[%]	92,38/92,94
Dust Particles (At 10% O ₂)	[mg/m ³]	19,8/26,2
Weight	[kg]	350
Water volume	[l]	125
Max. quantity of pellets in pellet storage	[kg]	180
Max. operating pressure	[bar]	2
Max. hot water temperature	[°C]	80
Min. cold water temperature	[°C]	50
Consumption of pellets min / max	[kg/h]	1,82/6,36
Connection voltage of the boiler	[V/Hz]	230/50



www.waltis-heating.com

Contact

GNC

Ir. Lelystraat 1a

4251 LS Werkendam

+31 (0) 629433305

contact@gncduurzaam.nl

Sales and Representative

